

HDW043_A5001L

4.3 Inch, 480xRGBx800, 16.7M Colors, IPS screen

CTP, With shell, HDMI interface display



Record of Revision

Ver	Revise Date	Content	Editor
00	2022-12-5	First Edition	Kaya

● Display

Item	Parameter	Description
Color	16.7M(16777216)colors	24 bit color 8R8G8B
Panel Type	IPS	IPS TFT LCM ,wide viewing angle
Viewing Angle	85/85/85/85 (L/R/U/D)	Best View: symmetrical
Active Area (A.A.)	93.20mm (W) ×55.76mm (H)	480×800
View Area (V.A.)	93.20mm (W) ×55.76mm (H)	480×800
Resolution	480×800	Support 0°/90°/180°/270°rotated display
Backlight	LED	≥20000H (Continuous working with maximum brightness, time of the brightness decays to 50%)
Brightness	250nit	-

Note: You can use dynamic screen saver wallpapers to avoid afterimages caused by fixed page display for a long time.

● Voltage & Current

Item	Descriptions	
Power Voltage	12~36V, typical value of 12V	
Current parameters	120mA	VCC=12V (Minimum starting voltage)
	120mA	VCC=12V (Standard supply voltage)
	80mA	VCC=36V (Maximum supply voltage)

Recommended power supply: 12V 1A DC

● Reliability Test

Item	Conditions	Min	Typ	Max	Unit
Working Temperature	60%RH at 12V voltage	-20	25	70	℃
Storage Temperature	-	-30	25	80	℃
Working Humidity	25℃	10%	60%	90%	RH
ESD	Air discharge ±4KV				
Protective Level	IP65(Front)				

● Interface

Item	Descriptions
Socket	Power interface, HDMI interface, USB interface
USB Interface	Yes (Connect USB capacitive touch screen)
SD Card Slot	None

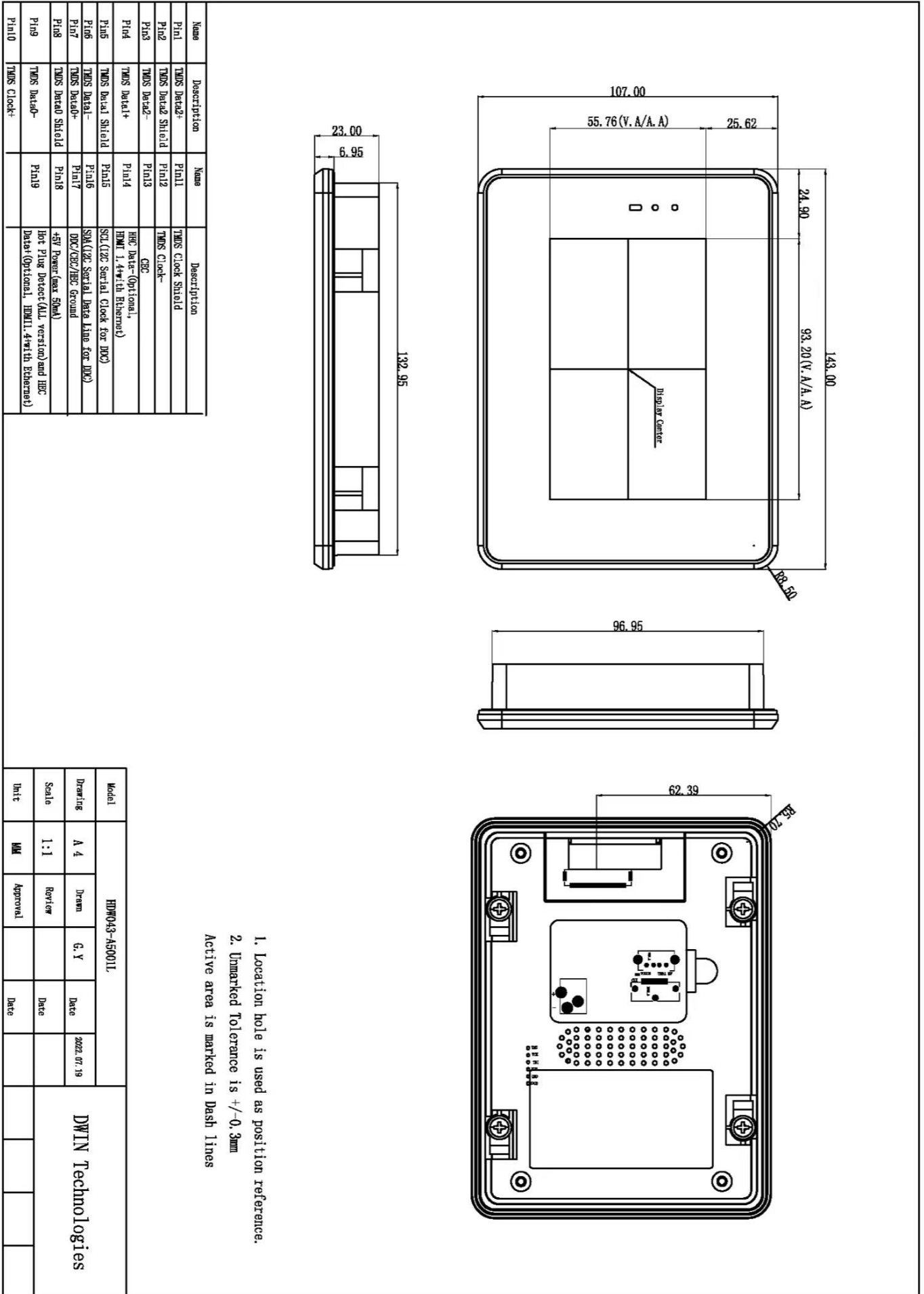
● Peripheral

Peripheral	Capacitive touch panel
------------	------------------------

● Packing Capacity & Dimension

Dimension				
Dimension	143.0(W)×107.0(H)×23.0(T)mm			
Net Weight	280g			
Packing Capacity				
Model	Size	Layer	Quantity/Layer	Quantity(Pcs)
Carton1:	220mm(L)×160mm(W)×47mm(H)	1	1	1
Carton2:	250mm(L)×200mm(W)×80mm(H)	2	1	2
Carton3:	320mm(L)×270mm(W)×80mm(H)	2	2	4
Carton4:	450mm(L)×350mm(W)×300mm(H)	1	20	20
Carton5:	600mm(L)×450mm(W)×300mm(H)	1	34	34

Disclaimer: The product design is subject to alternation and improvement without prior notice.



Installation Schematic

