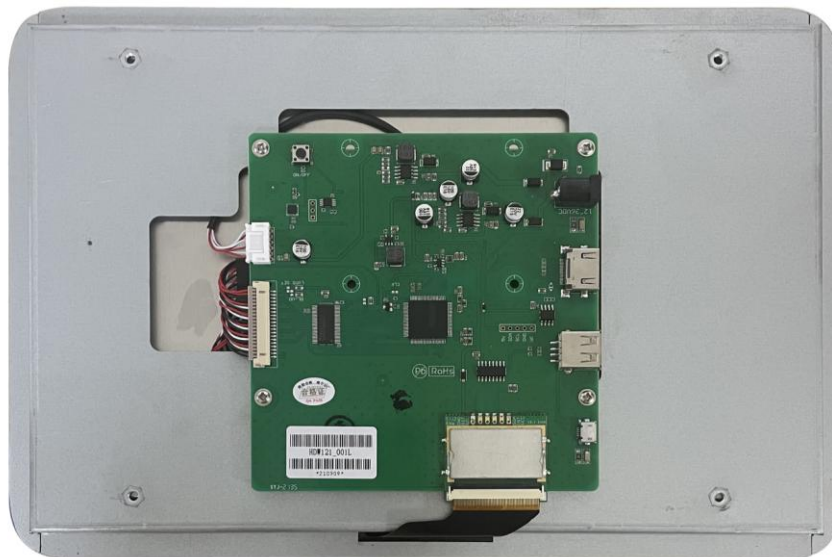
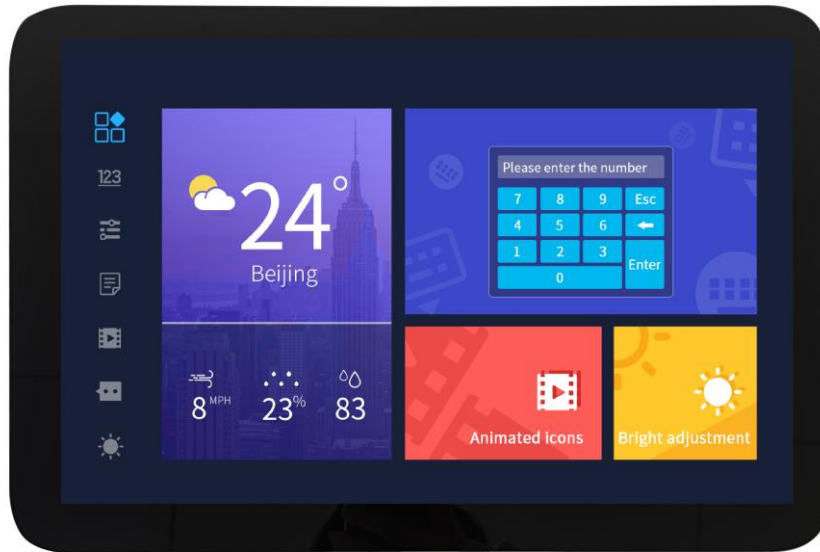


HDW121_001L

**12.1-inch, 1280*800, 16.7M colors, TN screen,
CTP, HDMI multimedia display**



1 Display parameters

Properties	Parameters	Description
Color	16.7M(16777216)colors	24 bit color 8R8G8B
LCD type	TN	TN process TFT LCM, normal viewing angle
Viewing angle	70/70/50/70(L/R/U/D)	-
Active Area (A.A.)	261.12mm(W) x 163.20mm(H)	1280×800
Visual area(V.A.)	262.7mm(W)x164.8mm(H)	1280×800
Resolution	1280×800	Support 0°/90°/180°/270°rotated display
Backlight	LED	≥30000H(Time of the brightness decaying to 50% on the condition of continuous working with the maximum brightness)
Brightness	300nit	-

Note: Long time display of high contrast still image over 30 minutes may lead to display residual shadow, please use screen saver to avoid this problem.

2 Voltage & current

Item	Conditions	Min	Typical	Max	Unit
Power voltage	-	12.0	12.0	36.0	V
Operating Current	VCC = +12V, Backlight on		660		mA
	VCC = +12V, Backlight off		-		mA

Recommended power supply: 12V 1A DC

3 Reliability test

Item	Conditions	Min	Typical	Max	Unit
Operating temperature	60%RH at 12V voltage	-30	25	80	℃
Storage temperature	-	-30	25	80	℃
Operating humidity	25℃	10%	60%	90%	RH

4 Interface parameters

Properties	Conditions	Min	Typical	Max	Unit
Interface cable	6-36V power interface, HDMI interface				
USB interface	Yes				
SD card slot	None				

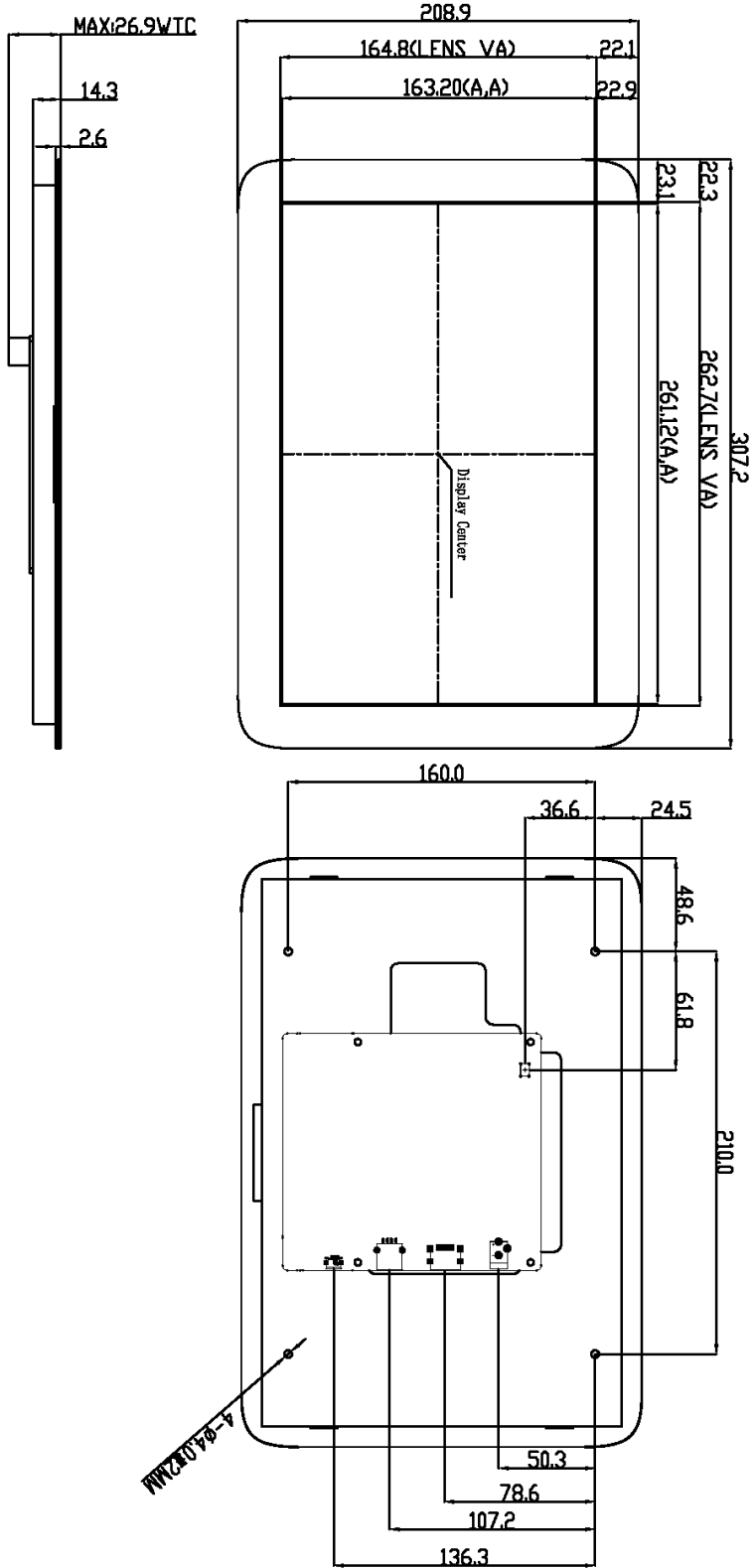
5 Peripheral

Peripheral	Capacitive touch panel
------------	------------------------

6 Packaging & dimensions

Form factor	307.2mm(W)×208.9mm(H)×26.9mm(T)	
Net weight	-	
Packaging Standards		
Model	Dimensions	Quantity(Pcs)
Carton2	250mm(L)×200mm(W)×80mm (H)	4
Carton3	320mm(L)×270mm(W)×80mm (H)	6
Carton4	450mm(L)×350mm(W)×300mm(H)	20
Carton5	600mm(L)×450mm(W)×300mm(H)	34
Carton6	450mm(L)×420mm(W)×300mm(H)	30

Disclaimer: the data is for reference only and the information of product design that do not affect performance parameters and utilization is subject to alternation without prior notice.



Pin name	Pin description	Pin name	Pin description
Pin1	TMDS Data2+	Pin11	TMDS Clock Shield
Pin2	TMDS Data2 Shield	Pin12	TMDS Clock-
Pin3	TMDS Data2-	Pin13	CEC
Pin4	TMDS Data1+	Pin14	HEC Data-Optional/HDMI 1.4+with Ethernet)
Pin5	TMDS Data1 Shield	Pin15	SCL/CEC Serial Clock for DDC)
Pin6	TMDS Data1-	Pin16	SDA/CEC Serial Data Line for DDC)
Pin7	TMDS Data0+	Pin17	DDC/CEC/HEC Ground
Pin8	TMDS Data0 Shield	Pin18	+5V Power(max 50mA)
Pin9	TMDS Data0-	Pin19	Hot Plug Detect(Full versions and HEC Data+ Optional/HDMI 1.4+with Ethernet)
Pin10	TMDS Clock+		

Location hole is used as position reference.
 Unmarked Tolerance is +/-0.3mm
 Active area is marked in Dash lines

Model		HDW121_001		Date		Date		DWIN Technologies
Drawing	A 4	Drawn	JLG	20210428				
Scale		Review						
Unit	MM	Approval						

7 Revision records

Version	Revise date	Content	Editor
00	2021-08-12	First Edition	ZYJ
01	2021-10-18	Add physical drawing	ZYJ

Please contact us if you have any questions about the use of this document or our products, or if you would like to know the latest information about our products.

E-mail: dwinhmi@dwin.com.cn

DWIN website: www.dwin-global.com

Thank you all for continuous support of DWIN, and your approval is the driving force of our progress!